

SHUBERT THEATRE

247 COLLEGE STREET, NEW HAVEN, CT 06510
203-624-1825



TECHNICAL SPECIFICATIONS AND EQUIPMENT INVENTORY

HALL SEATING CAPACITY

Orchestra	780
Mezzanine	491
Balcony	393
TOTAL:	1664

STAGE DIMENSIONS

EXACT MEASUREMENTS OF DISTANCES

Deck to grid	65'-0"
Width of Proscenium opening	38'-3"
Height of Proscenium opening	30'-0"
Deck of Loading Bridge	55'-0"
Deck of Fly Floor	29'-0"
Clearance under Fly Floor (allowing for ventilation ducts)	24'-0"
Plaster line to back wall	37'-6"
Plaster line to front apron	4'-0" (at Center)
Plaster line to first system pipe	2'-2"
Plaster line to last system pipe	36'-8"
Center line to Stage Right	50'-0"
Center Line to Stage Left	41'-0"
Height of #1 Box Boom	29'-4" (from Auditorium Floor)
Height of #1 Box Boom	4'-0" (from Box Floor)
Distance from Wall of Far Box Boom	1'-1"
Height of Far Box Boom	33'-6"
Length of Far Box Boom	14'-0"

Distance from Wall of Near Box Boom	1'-0"
Distance from Proscenium of Near Box Boom	19'-6"
Distance from Mezzanine Rail to Edge of Stage(lower)	32'-8"
Height of Mezzanine Rail(lower)	11'-5" (from Auditorium Floor)
Length of Mezzanine Rail(lower)	18'-0"
Height of Balcony Rail(upper)	28'-5" (from Auditorium Floor)
Distance from Balcony Rail to edge of Stage(upper)	46'-8"
Length of Balcony Rail(upper)	60'-0"
Distance from Light Booth to Edge of Stage	73'-0"

PLEASE NOTE:

Balcony Rail prevents follow spots from hitting the stage apron or the conductor in the pit

CROSSOVER: Through trap room

STAGE FLOOR: Softwood, not concrete covered in masonite.

MARLEY: Black one sided, 5' wide x 40' long x 35' depth

HOUSE DRAPERY

HOUSE CURTAIN: A warm yellow colored drop, chained and center is split.

LEGS:	5 pairs	Black Velour	30' x 10' flat
BORDERS:	4	Black Velour	12' x 50' flat
CYCLORAMAS:	1	Light Blue	30' x 50' seamless
SCRIMS:	2	Black	30' x 50' seamless
	1	Shark tooth Scrim	30' x 50' seamless
BLACK-OUT DROP:	3	Black Velour	30' x 50' flat
BOUNCE:	1	White Muslin	30' x 50' seamless
STAR DROP:	1	RGB Chameleon	25' x 40'

CARPENTER SPECS

FLY GALLEY

- All Counterweight Sets are five line sets
- The distance between sets is shown on the attached schedule
- Sets 1-35 are single purchase
- Sets 36-48 are double purchase

- All sets are overhung on grid
- Grid is clear to spot hemp pickup lines and/or full five line hemp sets
- Fly floor has a complete double pin rail
- Fly floor has one "mule"
- Locking rail is located on the fly floor stage left
- T-Track type counterweight system
- Arbors are 10ft long with a capacity of @ 1100 pounds
- System pipes are 50ft long
- Stage Right fly floor has a pin rail for electric pickups.

LOADING DOOR: **STREET LEVEL**, located stage left off of College Street. It measures 8' x 10' (outside door) and OFFSET 8'-10' (inside door). Single truck alley.

ELEVATOR: Located in loading area and goes to wardrobe and dressing rooms. It measures elevator door: 4'-0" x 7'-0" and its inside dimensions: 5'-6" x 6'-9".

WARDROBE: Theater has a complete wardrobe room equipped with three (3) washing machines and three (3) dryers. Theater also has irons and ironing boards. Wardrobe racks available and dressing rooms equipped with rack and shelves.

DRESSING ROOMS (11 TOTAL)

ROOM NUMBER	SIZE	FACILITIES
1	11.5' x 5.5'	2 Stations, 1 Bathroom w/ Shower
2	11.5' x 5.5'	1 Station, 1 Bathroom w/ Shower
3	11.5' x 5.5'	2 Stations, 1 Bathroom w/ Shower
4	11.5' x 5.5'	1 Station, 1 Bathroom w/ Shower
5	24.5' x 9'	4 Stations, 1 Sink, Connect to #6 via curtain
6	24.5' x 9'	4 Stations, 1 Sink, Connect to #5 via curtain
7	8.5' x 9'	8 Stations, 1 Sink
8	8.5' x 9'	7 Stations, 1 Sink
9	32.5' x 9'	10 Stations, 1 Sink
10	32.5 x 9'	10 Stations, 1 Sink

11	32.5 x 9'	6 Stations, 1 Sink
Production Room		2 Folding Tables w/ Chairs, In Trap Room
Company Room		1 Folding Table w/ Chair, Next to Green Room

ADDITIONAL FACILITIES: Men's and Women's Restrooms near dressing rooms have 2 showers each.
Quick Change Dressing Room at Stage Level – Stage Right

INTERNET

WIFI: An open network (Shubert Guest) is available throughout the Dressing Room area and Theatre.

HARDLINE: A direct line ethernet port is located in the Production Office in the Trap Room.

SOUND SYSTEM

MIXING CONSOLE

- 1 Yamaha Rivage PM5
- 1 Yamaha CL 5
- 1 Rio3224-D I/O Rack from SR
- 1 Rio1608-D I/O Rack from SR

CONTROL AND PROCESSING

- 1 Midas XL88 – 8x8 Rack-mounted Matrix Mixer
- 1 MacBook Pro equipped with Compass Software for processing control

PLAYBACK

- 1 Denon – DN-C80 CD Player
- 1 Tascam – CD-RW901SL Rewritable Recorder
- 1 Mac Mini
- 1 QLab

MICROPHONES

2	Shure Axient Digital 4 CH Receiver	4	DPA 4061 Core + Omni, Black
8	Shure Axient SM58 Capsules	4	DPA 4061 Core + Omni, Beige
1	KSM9 Capsule Only	3	Sennheiser 421
2	DPA 4066 Core + Omni Headset, Beige	12	SM58
		2	AKG 451
8	Shure Axient Digital Bodypacks TX	1	Shure SM81
2	Beta 58 Capsule Only	4	Crown PCC 160s
2	DPA 4066 Core + Omni Headset, Black		
6	Shure URD4 Wireless SM58 OR 6 Wireless LAV's		

DRUM MICS

3	Sennheiser E604
1	AKG D112

DI'S

4	Countryman
2	Radial J48

SPEAKER SYSTEMS

MAIN CLUSTER SYSTEM

10	Center: Meyer Leopards (installed 3/2024)
	Meyer Galileo Galaxy Processing
	High output integrated speaker cluster hung in a horizontal position.

PROSCENIUM SYSTEM

2	Meyer UPQ-D1 Self-Powered Speaker 80" x 50" (installed 9/2023)
	Meyer Galileo Galaxy Processing
	Located left and right in the coves.

FRONT FILL APRON SYSTEM

6	D&B E6 Speakers (installed 9/2021)
---	------------------------------------

1 D&B 10D Power Amplifier

FILL SPEAKER SYSTEM: ORCHESTRA

6 Under Balcony D&B E8 Speakers (installed 9/2023)

1 D&B 5D Power Amplifier

2 Sides D&B Yi10P Speakers (installed 7/2024) (Powered by 10D Power Amplifier)

FILL SPEAKER SYSTEM: MEZZANINE

6 Under Balcony D&B E8 Speakers (installed 7/2024)

1 D&B 5D Power Amplifier

2 Sides D&B Yi10P Speakers (installed 7/2024)

1 D&B 10D Power Amplifier (powering Yi10P)

FILL SPEAKER SYSTEM: BALCONY

4 Under Balcony D&B E8 Speakers (installed 7/2024)

1 D&B 5D Power Amplifier

2 Sides D&B Yi10P Speakers (installed 7/2024)

1 D&B 10D Power Amplifier

SIDE BOXES

4 D&B E8 Speakers (installed 7/2024)

1 D&B 10D Power Amplifier

SUBWOOFER SYSTEM

2 Meyer 2100-LFC located in Orchestra Box A (installed 7/2024)

MISC

4 EV XARRAY 15" monitor

4 Crown Macro-Tech 36x12 Amplifier

CONCERT SHELL/MUSICIAN ITEMS

Approximately 1200 square feet, for approximately 100 musicians, with ample overhead lighting.

45	Wenger Musician Chairs	5	Wenger Cellist Chairs
2	Wenger Conductor/Percussionist Chairs	50	Wenger Endur Music Stands
30	Aria Forte LED Music Stand Light		

VIDEO

- FOH Projection built in system.
- Panasonic PT-RQ35KU 30500 Lumen Projector. (Installed 4/2024)
 - 12'5" Center Lens Height to orchestra floor
 - Available Lens: ET-D75LE10, ET-D75LE20, ET-D75LE30, ET-D75LE6
- Video Control located SR. Blackmagic Design ATEM Television Studio HD8 ISO
 - 8-Input 3G-SDI 1080p60 Live Switcher, Mini Converter HDMI to 12G, 12G to HDMI
- Capability to accommodate HDMI, SDI, 2 Fiber Outputs and DVD playback.

ELECTRICS

POWER:	Company switch or road services is located stage right Lugs available in Company Switch-2 downstage switches have tails Power configuration: 3 phase 4wire 120/208 volt AC Company switch can facilitate up to 4-400 amp 3 phase services Power available in spotlight booth <ul style="list-style-type: none">3 L630 30 amp 2 pole Outlets for Lighting instruments3 L520 20 amp outlets for House spotlights2 fiber lines run from spot light booth to SR
HOUSELIGHTS:	Dimmer control (from backstage) House lights and on-stage work lights work from stage right
LIGHTING CONTROL:	ETC Ion XE 20 12k Console with 40 submaster wing <ul style="list-style-type: none">2 Fiber runs from console position to SR4 Cat 6 lines from console position to SR3 DMX lines from console position to SRAccess to house network from the console position or SR
DIMMERS:	282 ETC Sensor 3 dimmer racks (2.4KW per dimmer)

CIRCUITS: Mezzanine rail(lower) has six (6) circuits connector type 3-pin
 Balcony rail(upper) has thirty (30) circuits connector type 3-pin
 Each of the four (4) Box Boom positions has eight (8) circuits 3-pin

BASIC HOUSE LIGHTING INSTRUMENT INVENTORY

FRONT OF HOUSE

- 18 ETC Source 4 LED Series 2 19⁰ – Balcony Rail
- 10 ETC Source 4 750 Watt 19⁰ – Balcony Rail
- 1 Elation Fuze Max Profile – Balcony Rail (center)
- 12 ETC Source 4 LED Series 2 19⁰ – Far Box Booms (6 left & right)
- 2 Elation Fuze Max Profile – Far Box Booms (1 per side)
- 2 ETC Source 4 750 Watt 14⁰ – Near Box Booms (1 left & right) Conductor Specials
- 2 ETC Source 4 LED Series 2 19⁰ – Near Box Booms (1 left & right)
- 2 ETC Source 4 LED Series 2 26⁰ – Near Box Booms (1 left & right)
- 2 ETC Source 4 LED Series 2 36⁰ – Near Box Booms (1 left & right)
- 2 ETC Source 4 LED Series 2 50⁰ – Near Box Booms (1 left & right)
- 2 ETC WRD LED Caps 19⁰ – Near Box Booms (1 left & right) Architectural
- 2 ETC WRD LED Caps 26⁰ – Near Box Booms (1 left & right) Architectural
- 3 Lycian Superstar 1400 LED Model 1285 - 700+ foot candles at plaster line (73')

STAGE

- 8 ETC Source 4 LED Series 2 26⁰
- 8 ETC Source 4 LED Series 2 36⁰
- 54 ETC Colorsource LED Pars
- 10 Elation Fuze Max Profile
- 23 ETC Source 4 750 Parnels
- 77 ETC Source 4 750 bodies
- 8 Altman - Spectra Cyc 200 (Cyc)
- 8 Altman - Spectra Cyc 200 (Ground Row)

Barrels

2	ETC Source 4 14 ⁰ barrels
44	ETC Source 4 19 ⁰ barrels
53	ETC Source 4 26 ⁰ barrels
43	ETC Source 4 36 ⁰ barrels
12	ETC Source 4 50 ⁰ barrels

HAZE

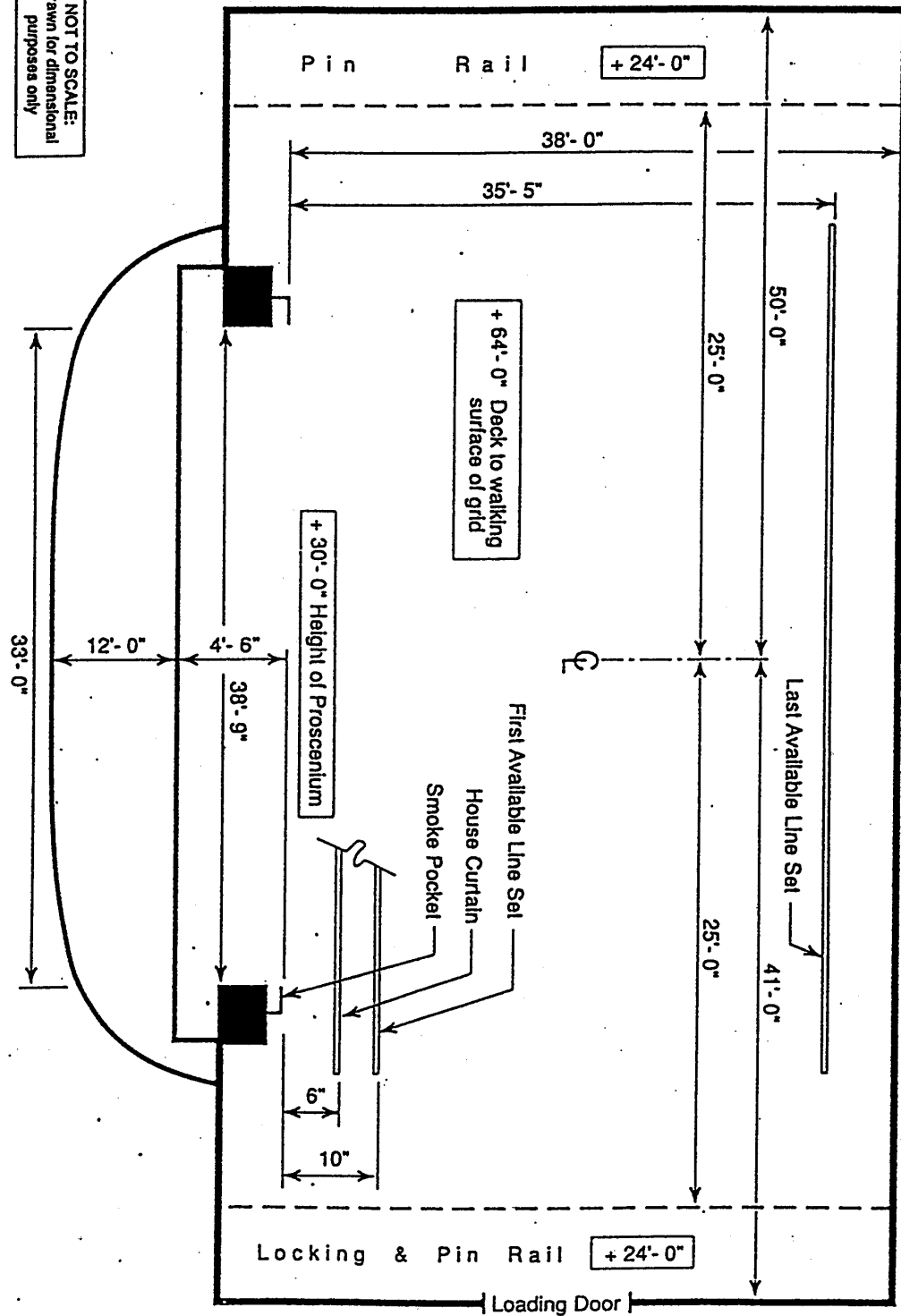
1. Ultratec – Radiance Hazer

STAGE GROUNDPLAN

NOTES:

SHUBERT
NEW HAVEN

NOT TO SCALE:
Drawn for dimensional
purposes only



LINE SET SCHEDULE		SHUBERT THEATRE- NEW HAVEN
Set	Distance	
	0' 0"	Plaster Line
1	2'-2'	
2	2'-10"	
3	3'-7'	
4	4'-6"	
5	5'-2"	
6	5'-10"	
7	6'-5"	
8	7'-1"	
9	7'-9"	
10	8'-5"	
11	9'-1"	
12	9'-9"	
13	10'-5"	
14	11'-2"	
15	11'-10"	
16	12'-7"	
17	13'-3"	
18	14'-6"	
19	15'-2"	
20	15'-10"	
21	16'-6"	
22	17'-1"	
23	17'-10"	
24	18'-7"	
25	19'-3"	
26	20'-0"	
27	20'-9"	
28	21'-4"	
29	22'-1"	
30	22'-9"	
31	23'-4"	
32	24'-1"	
33	24'-10"	
34	25'-7"	
35	26'-5"	
36	27'-8"	
37	28'-4"	
38	29'-1"	
39	29'-9"	
40	30'-5"	
41	31'-2"	
42	31'-10"	
43	32'-8"	
44	33'-8"	
45	34'-5"	
46	35'-1"	
47	35'-10"	
48	36'-8"	

NOTES:

- Sets 36 - 48 are Double Purchase
- All sets are 5-Line Counterweight
- Cables & Sheaves are overhung on grid
- Full Pin Rail and ability to spot hemp sets available
- Pin Rail available also on the stage right fly floor primarily for pick up lines and tab lines