

# SHUBERT THEATRE

247 COLLEGE STREET, NEW HAVEN, CT 06510  
203-624-1825



## TECHNICAL SPECIFICATIONS AND EQUIPMENT INVENTORY

### HALL SEATING CAPACITY

<b>Orchestra</b>	<b>780</b>
<b>Mezzanine</b>	<b>491</b>
<b>Balcony</b>	<b>393</b>
<b>TOTAL:</b>	<b>1664</b>

### STAGE DIMENSIONS

#### EXACT MEASUREMENTS OF DISTANCES

Deck to grid	65'-0"
Width of Proscenium opening	38'-3"
Height of Proscenium opening	30'-0"
Deck of Loading Bridge	55'-0"
Deck of Fly Floor	29'-0"
Clearance under Fly Floor (allowing for ventilation ducts)	24'-0"
Plaster line to back wall	37'-6"
Plaster line to front apron	4'-0" (at Center)
Plaster line to first system pipe	2'-2"
Plaster line to last system pipe	36'-8"
Center line to Stage Right	50'-0"
Center Line to Stage Left	41'-0"
Height of #1 Box Boom	29'-4" (from Auditorium Floor)
Height of #1 Box Boom	4'-0" (from Box Floor)
Distance from Wall of Far Box Boom	1'-1"
Height of Far Box Boom	33'-6"
Length of Far Box Boom	14'-0"

Distance from Wall of Near Box Boom	1'-0"
Distance from Proscenium of Near Box Boom	19'-6"
Distance from Mezzanine Rail to Edge of Stage(lower)	32'-8"
Height of Mezzanine Rail(lower)	11'-5" (from Auditorium Floor)
Length of Mezzanine Rail(lower)	18'-0"
Height of Balcony Rail(upper)	28'-5" (from Auditorium Floor)
Distance from Balcony Rail to edge of Stage(upper)	46'-8"
Length of Balcony Rail(upper)	60'-0"
Distance from Light Booth to Edge of Stage	73'-0"

**PLEASE NOTE:**

Balcony Rail prevents follow spots from hitting the stage apron or the conductor in the pit

**CROSSOVER:** Through trap room

**STAGE FLOOR:** Softwood, not concrete covered in masonite.

**MARLEY:** Black one sided, 5' wide x 40' long x 35' depth

## HOUSE DRAPERY

**HOUSE CURTAIN:** A warm yellow colored drop, chained and center is split.

<b>LEGS:</b>	3 pairs	Black Velour	30' x 10' flat
	2 pairs	Black Velour	30' x 12' flat
<b>BORDERS:</b>	4	Black Velour	12' x 50' flat
<b>CYCLORAMAS:</b>	1	Blue	30' x 50' seamed
<b>SCRIMS:</b>	1	Black	30' x 50' seamless
	1	Shark tooth Scrim	30' x 50'
<b>BLACK-OUT DROP:</b>	3	Black Velour	30' x 50' flat
<b>BOUNCE:</b>	1	White	40' x 50'

## CARPENTER SPECS

### FLY GALLEY

- All Counterweight Sets are five line sets
- The distance between sets is shown on the attached schedule
- Sets 1-35 are single purchase
- Sets 36-48 are double purchase
- All sets are overhung on grid

- Grid is clear to spot hemp pickup lines and/or full five line hemp sets
- Fly floor has a complete double pin rail
- Fly floor has one "mule"
- Locking rail is located on the fly floor stage left
- T-Track type counterweight system
- Arbors are 10ft long with a capacity of @ 1100 pounds
- System pipes are 50ft long
- Stage Right fly floor has a pin rail for electric pickups.

**LOADING DOOR:** **STREET LEVEL**, located stage left off of College Street. It measures 8' x 10' (outside door) and OFFSET 8'-10' (inside door). Single truck alley.

**ELEVATOR:** Located in loading area and goes to wardrobe and dressing rooms. It measures elevator door: 4'-0" x 7'-0" and its inside dimensions: 5'-6" x 6'-9".

**WARDROBE:** Theater has a complete wardrobe room equipped with three (3) washing machines and three (3) dryers. Theater also has irons and ironing boards. Wardrobe racks available and dressing rooms equipped with rack and shelves.

#### DRESSING ROOMS (11 TOTAL)

ROOM NUMBER	SIZE	FACILITIES
1	11.5' x 5.5'	2 Stations, 1 Bathroom w/ Shower
2	11.5' x 5.5'	1 Station, 1 Bathroom w/ Shower
3	11.5' x 5.5'	2 Stations, 1 Bathroom w/ Shower
4	11.5' x 5.5'	1 Station, 1 Bathroom w/ Shower
5	24.5' x 9'	4 Stations, 1 Sink, Connect to #6 via curtain
6	24.5' x 9'	4 Stations, 1 Sink, Connect to #5 via curtain
7	8.5' x 9'	8 Stations, 1 Sink
8	8.5' x 9'	7 Stations, 1 Sink
9	32.5' x 9'	10 Stations, 1 Sink
10	32.5 x 9'	10 Stations, 1 Sink

11	32.5 x 9'	6 Stations, 1 Sink
Production Room		2 Folding Tables w/ Chairs, In Trap Room
Company Room		1 Folding Table w/ Chair, Next to Green Room

**ADDITIONAL FACILITIES:** Men's and Women's Restrooms near dressing rooms have 2 showers each.  
Quick Change Dressing Room at Stage Level – Stage Right

## INTERNET

**WIFI:** An open network (Shubert Guest) is available throughout the Dressing Room area and Theatre.

**HARDLINE:** A direct line ethernet port is located in the Production Office in the Trap Room.

## SOUND SYSTEM

### MIXING CONSOLE

- 1 Yamaha Rivage PM5
- 1 Yamaha CL 5
- 1 Rio3224-D I/O Rack from SR
- 1 Rio1608-D I/O Rack from SR

### CONTROL AND PROCESSING

- 1 Midas XL88 – 8x8 Rack-mounted Matrix Mixer
- 1 MacBook Pro equipped with Compass Software for processing control

### PLAYBACK

- 1 Denon – DN-C80 CD Player
- 1 Tascam – CD-RW901SL Rewritable Recorder

### MICROPHONES

- |   |                  |
|---|------------------|
| 12 SM57   | 2 AKG 451        |
| 3 Sennheiser 421                                      | 1 Shure SM81     |
| 12 SM58   | 4 Crown PCC 160s |
| 6 Shure URD4 Wireless SM58 <b>OR</b> 6 Wireless LAV's |                  |

#### DRUM MICS

- 3 Sennheiser E604
- 1 AKG D112

#### DI'S

- 4 Countryman
- 2 Radial J48

#### SPEAKER SYSTEMS

##### MAIN CLUSTER SYSTEM

- 10 Center: Meyer Leopards (installed 3/2024)  
Meyer Galileo Galaxy Processing  
High output integrated speaker cluster hung in a horizontal position.

##### PROSCENIUM SYSTEM

- 2 Meyer UPQ-D1 Self-Powered Speaker 80" x 50" (installed 9/2023)  
Meyer Galileo Galaxy Processing  
Located left and right in the coves.

##### FRONT FILL APRON SYSTEM

- 6 D&B E6 Speakers (installed 9/2021)
- 1 D&B 10D Power Amplifier

##### FILL SPEAKER SYSTEM: ORCHESTRA

- 6 Under Balcony D&B E8 Speakers (installed 9/2023)
- 1 D&B 5D Power Amplifier
- 2 Sides D&B Yi10P Speakers (installed 7/2024) (Powered by 10D Power Amplifier)

##### FILL SPEAKER SYSTEM: MEZZANINE

- 6 Under Balcony D&B E8 Speakers (installed 7/2024)
- 1 D&B 5D Power Amplifier
- 2 Sides D&B Yi10P Speakers (installed 7/2024)
- 1 D&B 10D Power Amplifier (powering Yi10P)

#### FILL SPEAKER SYSTEM: BALCONY

- 4 Under Balcony D&B E8 Speakers (installed 7/2024)
- 1 D&B 5D Power Amplifier
- 2 Sides D&B Yi10P Speakers (installed 7/2024)
- 1 D&B 10D Power Amplifier

#### SIDE BOXES

- 4 D&B E8 Speakers (installed 7/2024)
- 1 D&B 10D Power Amplifier

#### SUBWOOFER SYSTEM

- 2 Meyer 2100-LFC located in Orchestra Box A (installed 7/2024)

#### MISC

- 4 EV XARRAY 15" monitor
- 4 Crown Macro-Tech 36x12 Amplifier

#### CONCERT SHELL

Approximately 1200 square feet, for approximately 100 musicians, with ample overhead lighting.

#### VIDEO

- FOH Projection built in system.
- Panasonic PT-RQ35KU 30500 Lumen Projector. (Installed 4/2024)
  - 12'5" Center Lens Height to orchestra floor
  - Available Lens: ET-D75LE10, ET-D75LE20, ET-D75LE30, ET-D75LE6
- Video Control located SR. Blackmagic Design ATEM Television Studio HD8 ISO
  - 8-Input 3G-SDI 1080p60 Live Switcher, Mini Converter HDMI to 12G, 12G to HDMI
- Capability to accommodate HDMI, SDI, 2 Fiber Outputs and DVD playback.

## ELECTRICS

<b>POWER:</b>	Company switch or road services is located stage right Lugs available in Company Switch-2 downstage switches have tails Power configuration: 3 phase 4wire 120/208 volt AC Company switch can facilitate up to 4-400 amp 3 phase services Power available in spotlight booth 3 L630 30 amp 2 pole Outlets for Lighting instruments 3 L520 20 amp outlets for House spotlights 2 fiber lines run from spot light booth to SR
<b>HOUSELIGHTS:</b>	Dimmer control (from backstage) House lights and on-stage work lights work from stage right
<b>LIGHTING CONTROL:</b>	ETC Ion XE 20 12k Console with 40 submaster wing 2 Fiber runs from console position to SR 4 Cat 6 lines from console position to SR 3 DMX lines from console position to SR Access to house network from the console position or SR
<b>DIMMERS:</b>	282 ETC Sensor 3 dimmer racks (2.4KW per dimmer)
<b>CIRCUITS:</b>	Mezzanine rail(lower) has six (6) circuits connector type 3-pin Balcony rail(upper) has thirty (30) circuits connector type 3-pin Each of the four (4) Box Boom positions has eight (8) circuits 3-pin

## BASIC HOUSE LIGHTING INSTRUMENT INVENTORY

### FRONT OF HOUSE

- |    |  |
|----|--|
| 18 | ETC Source 4 LED Series 2 19 <sup>0</sup> – Balcony Rail                                   |
| 10 | ETC Source 4 750 Watt 19 <sup>0</sup> – Balcony Rail                                       |
| 1  | Elation Fuze Max Profile – Balcony Rail (center)   |
| 12 | ETC Source 4 LED Series 2 19 <sup>0</sup> – Far Box Booms (6 left & right)                 |
| 2  | Elation Fuze Max Profile – Far Box Booms (1 per side)                                      |
| 2  | ETC Source 4 750 Watt 14 <sup>0</sup> – Near Box Booms (1 left & right) Conductor Specials |
| 2  | ETC Source 4 LED Series 2 19 <sup>0</sup> – Near Box Booms (1 left & right)                |
| 2  | ETC Source 4 LED Series 2 26 <sup>0</sup> – Near Box Booms (1 left & right)                |
| 2  | ETC Source 4 LED Series 2 36 <sup>0</sup> – Near Box Booms (1 left & right)                |
| 2  | ETC Source 4 LED Series 2 50 <sup>0</sup> – Near Box Booms (1 left & right)                |

- 2 ETC WRD LED Caps 19<sup>0</sup> – Near Box Booms (1 left & right) Architectural
- 2 ETC WRD LED Caps 26<sup>0</sup> – Near Box Booms (1 left & right) Architectural
- 3 Lycian Superstar 1400 LED Model 1285 - 700+ foot candles at plaster line (73')

---

#### STAGE

- 8 ETC Source 4 LED Series 2 26<sup>0</sup>
- 8 ETC Source 4 LED Series 2 36<sup>0</sup>
- 54 ETC Colorsource LED Pars
- 10 Elation Fuze Max Profile
- 23 ETC Source 4 750 Parnels
- 77 ETC Source 4 750 bodies
- 8 Altman - Spectra Cyc 200 (Cyc)
- 8 Altman - Spectra Cyc 200 (Ground Row)

#### Barrels

- 2 ETC Source 4 14<sup>0</sup> barrels
- 44 ETC Source 4 19<sup>0</sup> barrels
- 53 ETC Source 4 26<sup>0</sup> barrels
- 43 ETC Source 4 36<sup>0</sup> barrels
- 12 ETC Source 4 50<sup>0</sup> barrels

---

#### HAZE

- 1. Ultratec – Radiance Hazer

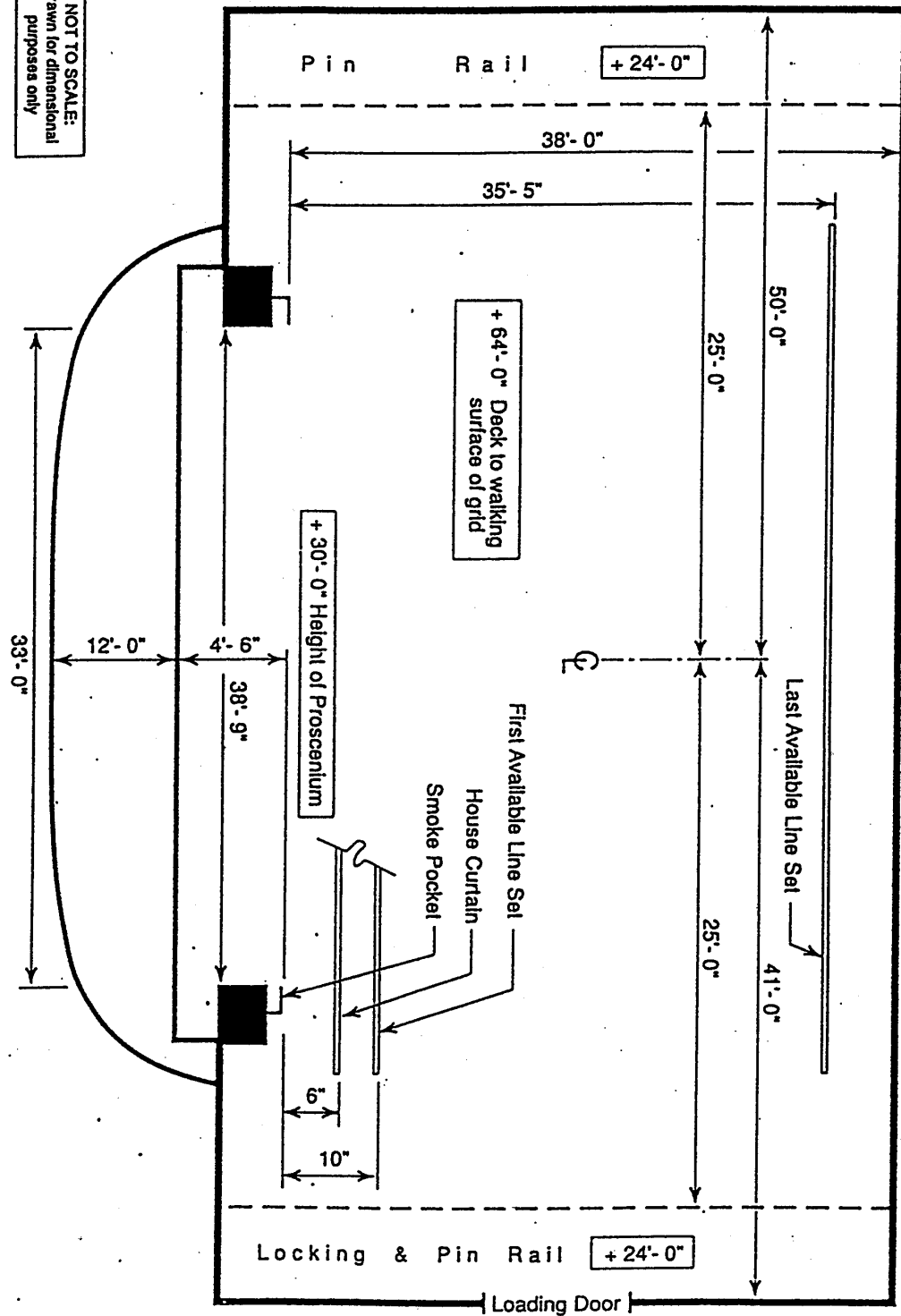


# STAGE GROUNDPLAN

## NOTES:

SHUBERT  
NEW HAVEN

NOT TO SCALE:  
Drawn for dimensional  
purposes only



LINE SET SCHEDULE		SHUBERT THEATRE- NEW HAVEN
Set	Distance	
	0' 0"	Plaster Line
1	2'-2'	
2	2'-10"	
3	3'-7'	
4	4'-6"	
5	5'-2"	
6	5'-10"	
7	6'-5"	
8	7'-1"	
9	7'-9"	
10	8'-5"	
11	9'-1"	
12	9'-9"	
13	10'-5"	
14	11'-2"	
15	11'-10"	
16	12'-7"	
17	13'-3"	
18	14'-6"	
19	15'-2"	
20	15'-10"	
21	16'-6"	
22	17'-1"	
23	17'-10"	
24	18'-7"	
25	19'-3"	
26	20'-0"	
27	20'-9"	
28	21'-4"	
29	22'-1"	
30	22'-9"	
31	23'-4"	
32	24'-1"	
33	24'-10"	
34	25'-7"	
35	26'-5"	
36	27'-8"	
37	28'-4"	
38	29'-1"	
39	29'-9"	
40	30'-5"	
41	31'-2"	
42	31'-10"	
43	32'-8"	
44	33'-8"	
45	34'-5"	
46	35'-1"	
47	35'-10"	
48	36'-8"	

#### NOTES:

- Sets 36 - 48 are Double Purchase
- All sets are 5-Line Counterweight
- Cables & Sheaves are overhung on grid
- Full Pin Rail and ability to spot hemp sets available
- Pin Rail available also on the stage right fly floor primarily for pick up lines and tab lines